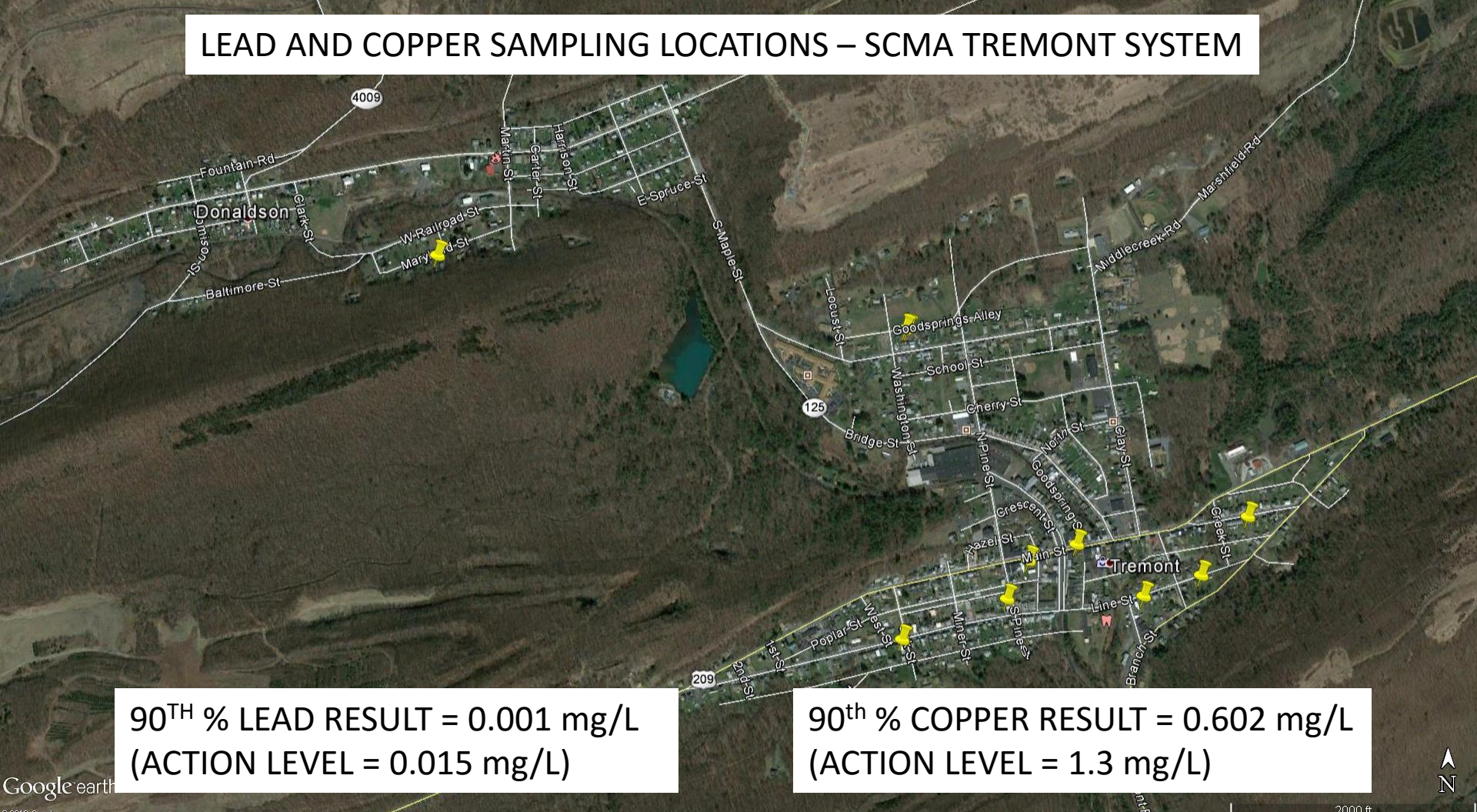


LEAD AND COPPER SAMPLING LOCATIONS – SCMA TREMONT SYSTEM



90TH % LEAD RESULT = 0.001 mg/L
(ACTION LEVEL = 0.015 mg/L)

90th % COPPER RESULT = 0.602 mg/L
(ACTION LEVEL = 1.3 mg/L)

